

**~General Instructions and Tips for the installation of leather camera cover~  
(Please observe international copyright laws as respects these instructions)**

You will need the following:

1. A safe work surface. This will not be dirty work such as replacing light seals or mirror dampers, but you should protect the surface beneath you, because you will be using solvent.
2. A suitable solvent. I prefer to use denatured alcohol to remove the old adhesive and glue. You can also use naphtha (lighter fluid), but this is my second choice. Please do not use acetone. It could dissolve or damage the paint on your camera.
3. A watchmaker's screwdriver or simply a small screwdriver with a flat head, some Q-Tips (or Cotton Buds) and maybe an old rag (dishtowel, old underwear, something like that), also you may use an old toothbrush.

Please take your time and read the instructions completely before starting to replace your camera's covering.

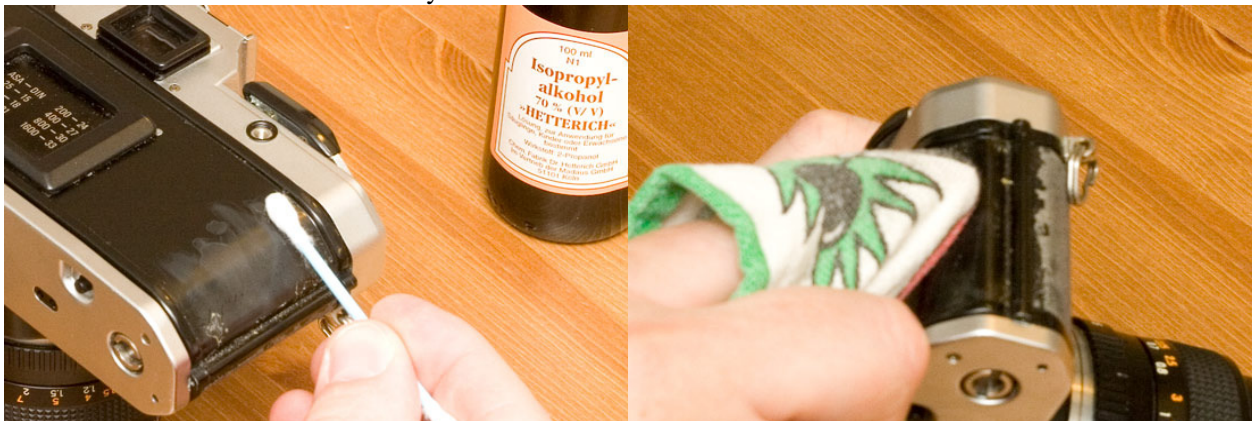
**~REMOVING THE OLD CAMERA COVERING~**

You can use the point of a knife blade to lift the old covering up. Lift a corner to begin the removal process.

The old covering will be firmly attached to the camera, but if you will lift up 2 or 3 cm, you can then use a pair of needle-nosed pliers to carefully remove the old cover. Or in some cases, you may be able to simply pull it away from the camera with your fingers.



Using alcohol and a Q-Tip (Cotton Bud) and old cloth, please remove all of the old adhesive. It is very important to remove all traces of the old adhesive. If any of the old adhesive is left on the camera, the new adhesive will not stick to it. You may need to clean the camera two or three times with the cloth and alcohol.



**~CLEANING OF THE CAMERA~**

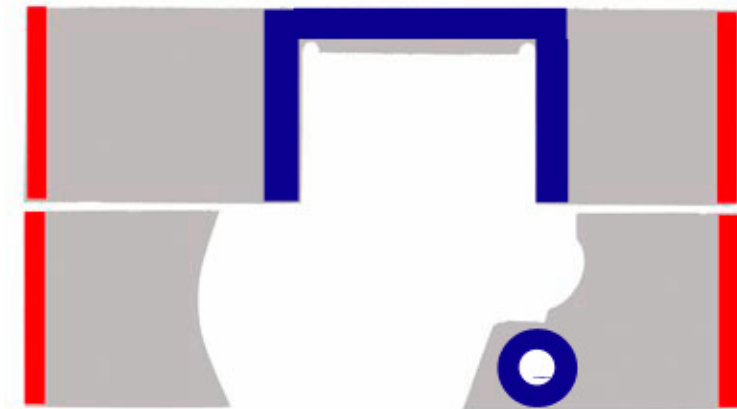
Now your camera is beautifully naked, and you may proceed with the cleaning. You can use the old cloth and alcohol, or you may also use an old toothbrush with alcohol or any other common household cleaning solution. The toothbrush is good because the bristles are stiff but not too stiff...you will not damage your camera with a toothbrush. Clean the entire camera, removing all of the old oils, dirt, dust, etc. Now is a good time to make it all nice again.



### ~ATTACHING THE NEW LEATHER COVERING~

**PLEASE NOTE:** When installing a self-adhesive product, you should lick the adhesive side before installing it. Your saliva will allow you time to adjust the piece as needed...it will keep the adhesive from being too sticky. When your saliva has dried, then your piece will adhere to the camera as it should. It is important to never use any solvent on the self-adhesive side of your leather piece...only saliva. Solvent like alcohol or naphtha will destroy the self-adhesive quality of your leather piece, but your saliva will not harm the self-adhesive material at all. Further explanation below:

Below you see an image in three colors. Lick the gray areas and the blue areas well. Put less saliva on the edges (the red area), and on the blue area also place a small quantity of liquid soap (like dishwashing soap). By doing this, your installation will be much easier and better.



Various installation methods have been tested, and the method above has proven to be the most effective and the method which will provide the most professional results.

### ~Front Right Side~

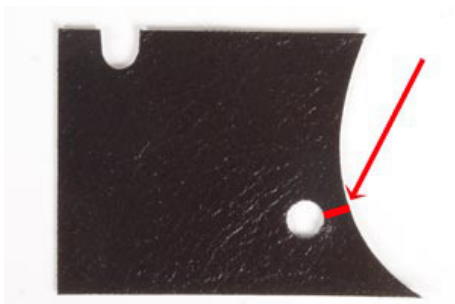
Remove the adhesive backing paper as shown in the image below. Then, lick the sticky side of your leather piece as described above. When you have done this, begin to apply this piece, starting with the edge and working toward the center of the camera. Use your screwdriver's flat blade to press the piece into place and then let your saliva dry.



**IMPORTANT NOTE:** Since the leather cover is not yet stuck to your camera, you can use your thumbs to move it so that it can be positioned to your satisfaction. Once your saliva has become dry, you will not be able to move the cover.

**~Front Left Side~**

The front left side is the same as the front right side, but you also have the self timer and the light on this side. Cut the cover as per picture below to get the possibility to slide the cover under the selftimer. Install carefully, use your flat screwdriver tip to press down, and adjust the piece while your saliva is still wet (see picture below):





### ~The Back Side~

Begin at the edge of the door, as you did on both of the front pieces. When you reach the film ID plate, you will need to use the flat blade of your screwdriver to align the cover with this plate, and you will need to use the flat blade of your screwdriver to tuck the piece under the top edge (as shown in the image below).



When you are finished, use your thumbs to be sure the piece aligns well with all edges (as shown above), and then set your camera aside for 1 day to become completely dry. Then press all pieces down firmly with your thumbs once again.

PLEASE NOTE: My instructions and tips for the installation of your camera leather covering have been carefully written to help you achieve a professional result. However, I can not be responsible for incorrect installation on your part or for any damage to your camera, your camera's lens, shutter, mirror, etc.

If you have any questions, please contact me at my e:mail address: [ebay@camerasolution.de](mailto:ebay@camerasolution.de)  
Camerasolution

Stefan Ihrke  
2008